

Spring Tales Newsletter



Wetland Wonders!

Table of Contents

Page 2: Article: Why We
Love Our Wetlands.

Page 3: What can you do
to help?

Vocab Activity

Page 4: At home wetland
demonstration

Written by
Danielle
Ashton
Intern, UC Davis

Photo: GoBOB/Shutterstock



Galen Leeds



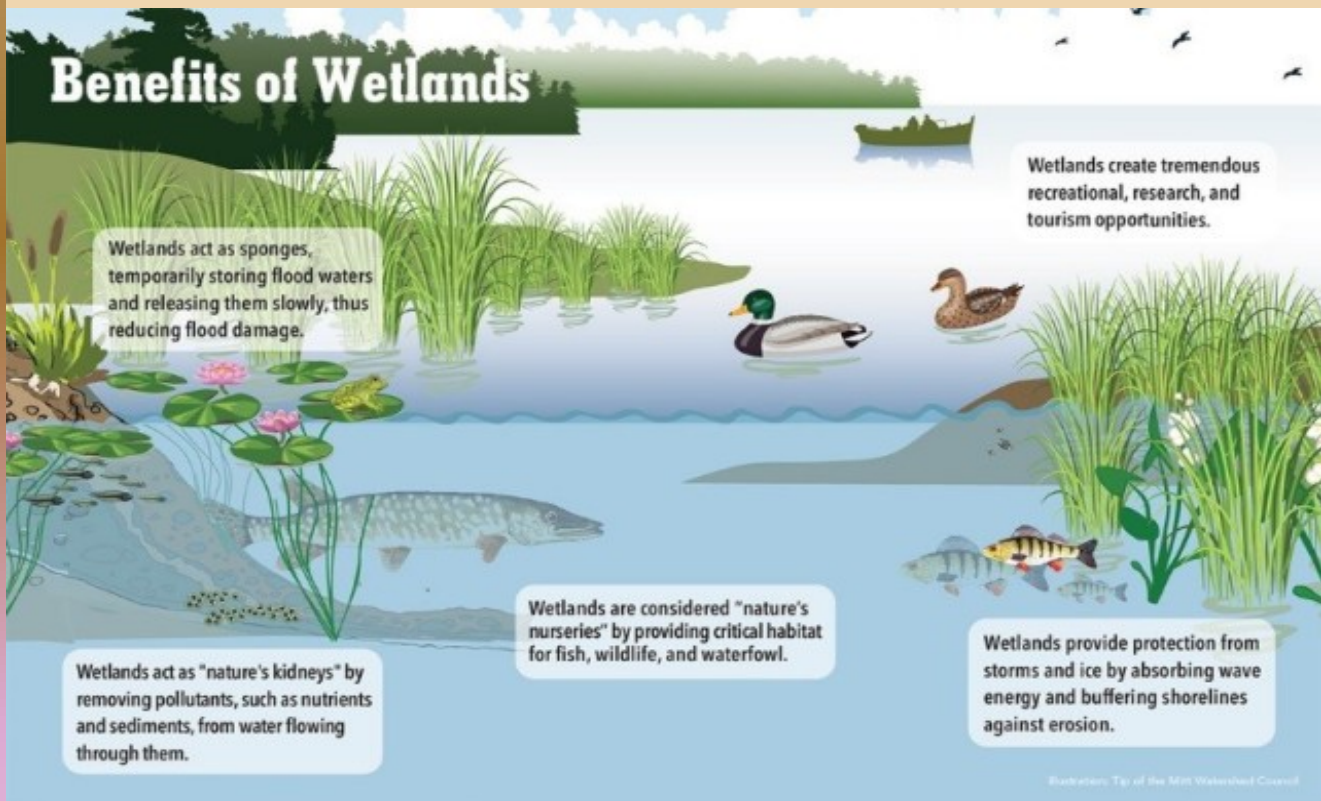
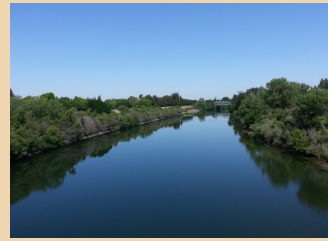
Our California wetlands not only provide wildlife with a healthy place to call home, but we humans also benefit from them. Read on to find out how wetlands help us and what you can do to help our wetland areas!

Conservation Pathways



Wonderful and Wild Wetlands

Our California wetlands provide many animals with a perfect place to call home. Creatures such as waterfowl, beavers, river otters, fish, coyotes, and many others depend on wetland areas to survive. In California, wetland areas include rivers, lakes, ponds and marshes. Certain animals like ducks need to live in these types of environments, so we at California Waterfowl Association work really hard to help conserve wetlands.



What Can You Do To Help?

There is plenty to do to help protect California wetlands and wildlife, no matter what age you are. Here are a few suggestions!

The Junior Duck Stamp drawing contest.

Every drawing that is turned in helps raise money for and awareness of waterfowl and wetlands. You can visit this website for more information: www.fws.gov/juniorduck/

Minimize your affect on the environment.

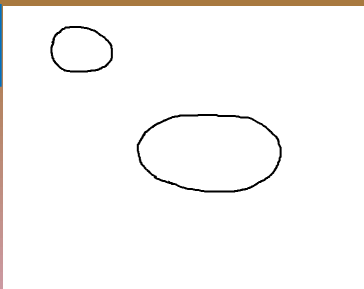
Things like picking up litter, turning off lights and water when you're not using them and recycling can be a big help!

Volunteering is another great way to get involved with helping our wetlands and wildlife, and it is a great chance to enjoy nature. You can visit www.calwaterfowl.org/volunteer/opportunities/ for more information.

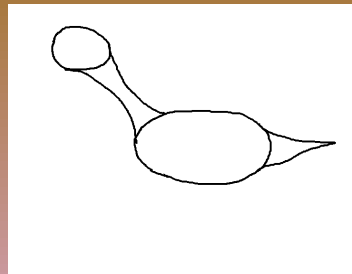


Junior Duck Stamp Drawing Practice! Follow along to practice drawing a duck!

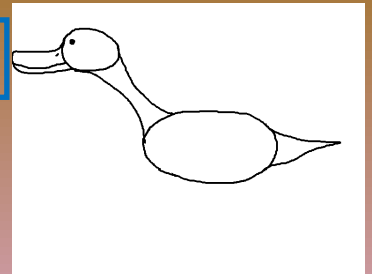
1.



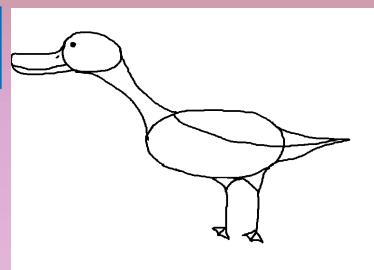
2.



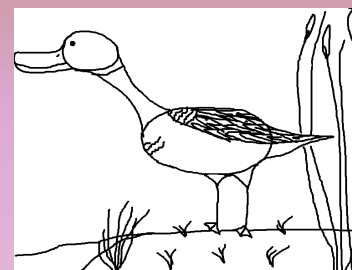
3.



4.



5.



You can also try
the 'Connect the
Dots' worksheet!

At-Home Wetland Demonstration!

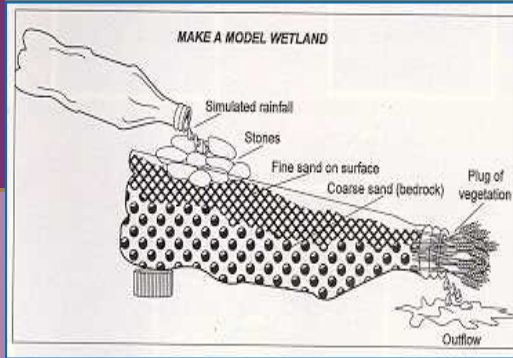
Here are instructions on how to build a model of a wetland.

What you'll need:

- Empty 2 liter bottle, cut in half along length of bottle
- Coarse sand
- Fine sand
- A few small rocks
- Some grass clippings
- Lid from the bottle

What to do:

- With an adult's help, cut bottle in half without damaging the neck of the bottle.
- Plug the neck of the bottle with grass clippings
- Fill bottom of bottle with coarse sand
- Put layer of fine sand on top of coarse sand
- Pack small stones in a heap near the wide end of the bottle
- Put wide end of bottle on lid so that it is angled down with the neck of the bottle sitting over a small bowl.



DEMONSTRATION 1:

- Pour water over the heap of small rocks in the wide end of your wetland. Watch through the sides of the bottle to see how the water level in the sand rises. You can measure how long it takes the water to flow through the wetland and then think about how much faster it would've flowed if it was running along the surface of the sand or pavement.

DEMONSTRATION 2:

- Mix some water with dirt in a clear container until the water is murky/muddy. Slowly pour this water over the rock pile at the end of your bottle. Keep some of the murky water in your container. After the water has flowed through your wetland, compare it to the murky water you started with. Is it any cleaner?



For more information on our education programs or to get involved, contact Molly Maupin, Education Coordinator at (916) 648-1406 Ext. 121 or mmaupin@calwaterfowl.org

For more information and our calendar of events go to www.calwaterfowl.org