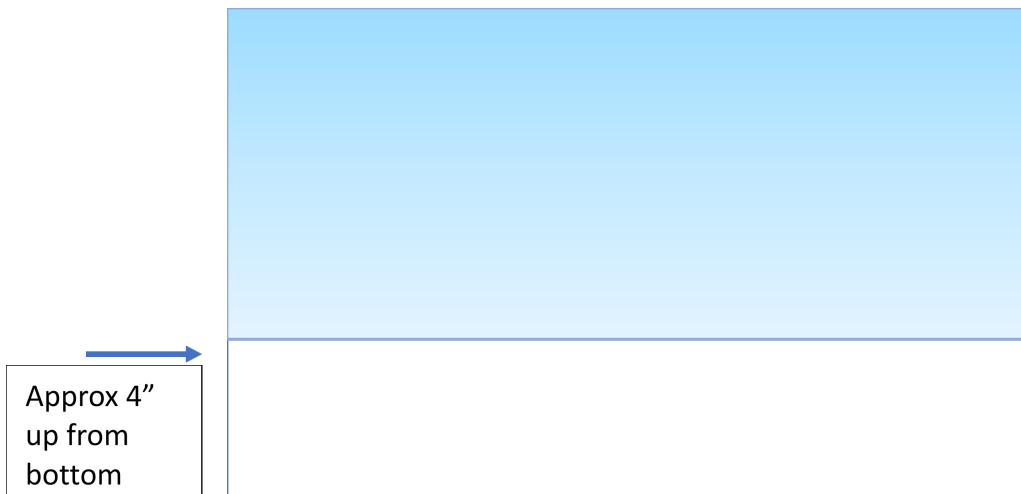
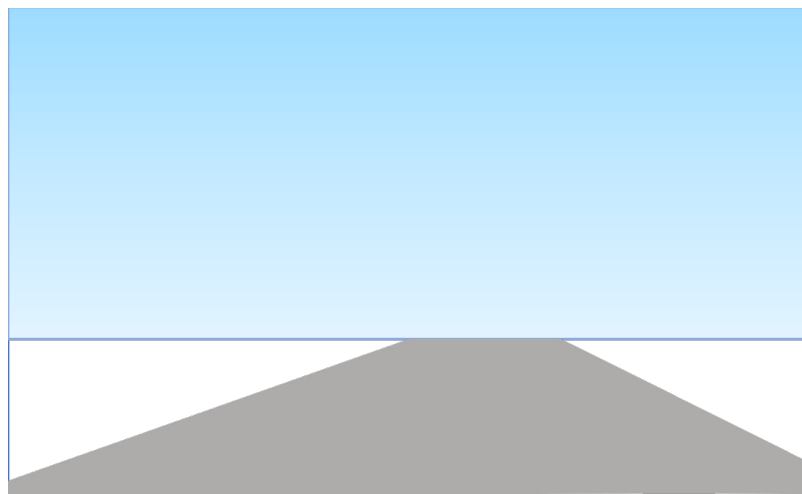


Step by Step instructions

1. Take blue with white to make light blue, paint horizontal strokes and continue to add more white as you work your way down from top.

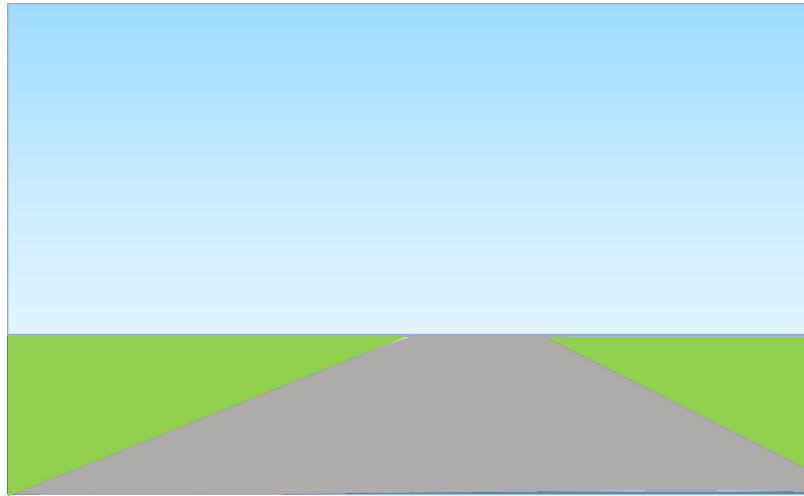


2. Mix white with small amount of black to make grey "triangle" off center to the right. Flat top and flat corners

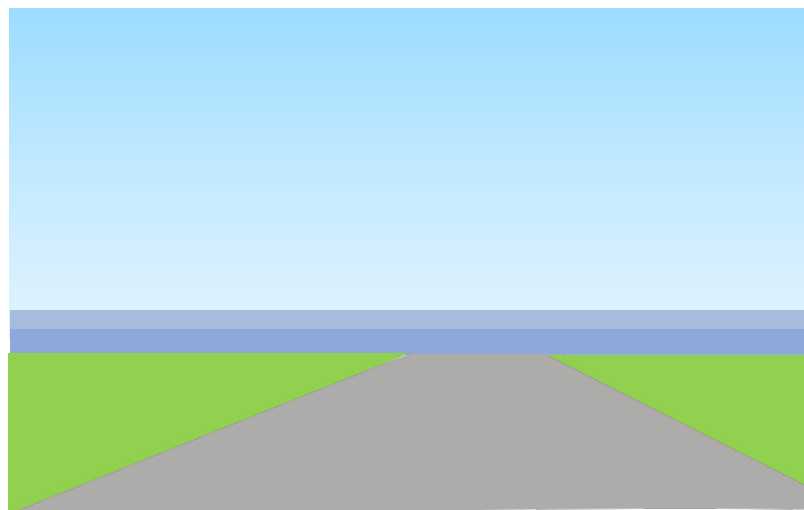


3. Mix Yellow with green to make light green. Paint blank triangles

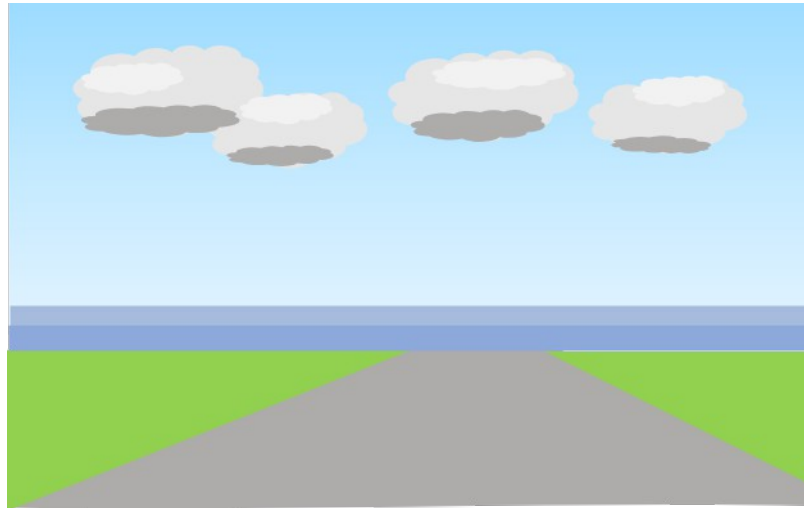
4.



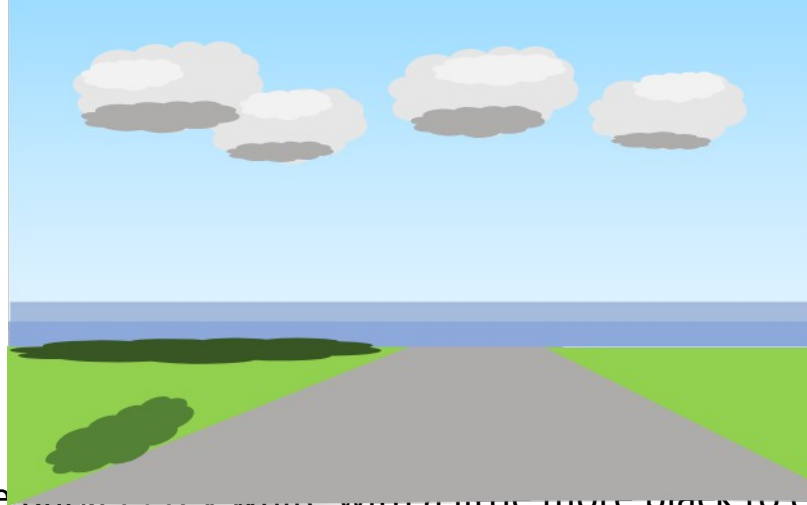
5. Mix Light blue again. (white + blue) Add a dot of black. Paint approx. 1/2" line above horizon street and grass. You can add just a touch more black after and do a smaller even line above it for marine layer



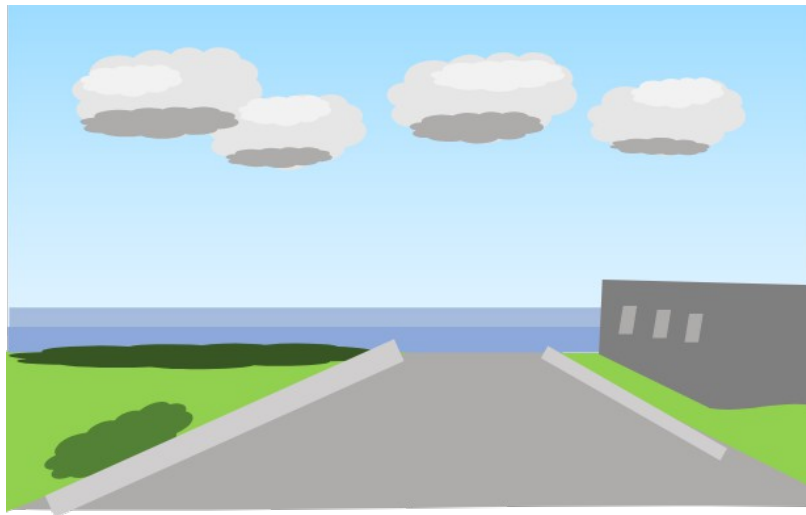
6. Start with white with small drop of black for light grey do loose puffy circle strokes to create clouds. As you paint add some darker and lighter highlights. Darker strokes on bottom of clouds lighter on top and middle.



7. Use three shades of green. Green with blue, green with touch of black and green with blue and yellow. Create different types of trees and bushes in left side triangle. See pic of painting for examples. You can just use small blobs with larger pointy brush to create bushes



8. Make darker grey white with a little more black to create houses on right. Add a little white to create lightest grey for curbs along both sides of street. Add a few light square blobs for windows on buildings.



9. Use Yellow with a touch of black to create roof on house on right. Use Green with a tiny bit of black, yellow, and blue for tree bark. Start at smallest part of street and work towards bottom of canvas. Paint thinner and shorter tree trunks at the end of street. Make trunks slightly taller and thicker as you move towards bottom of canvas.





10. Add some blue to your green and small dot of black to create dark rich green. Use spider leg type strokes that point at the ends to create palm trees.



11. Add in details.

- a. Use sm light grey blobs along right curb to create cars
- b. Add two thin yellow lines down middle of street going to left
- c. Can add small square with triangle roof and stick legs for life guard station at end of street in lt. to med grey
- d. Add dark line at end of street.
- e. Can paint the spot if you want to add. White with touch of yellow square
- f. Small thing black lines along left sidewalk that have u at top for lampposts

