

# STATE COLLEGE FOOD BANK - PROPOSED FLOOR PLAN

1" = 20'-0"

PROJECT  
NORTH



**STATE COLLEGE  
FOOD BANK**

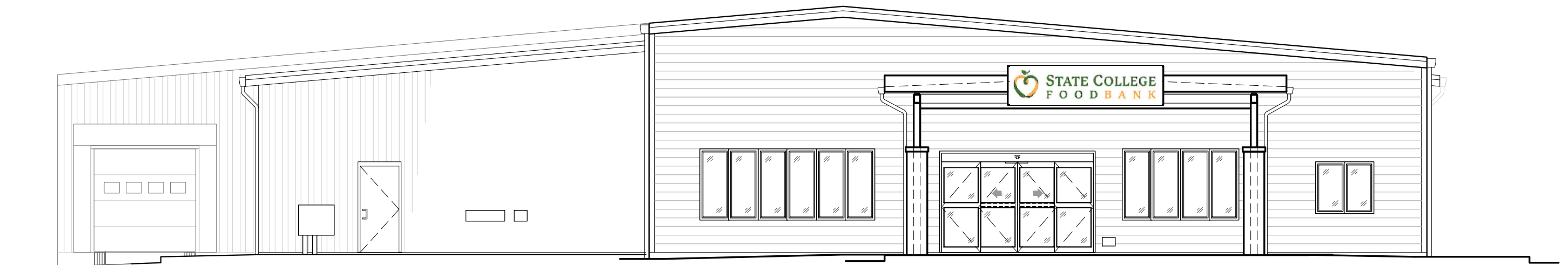
169 GERALD STREET  
STATE COLLEGE PA. 16801

**Fernsler  
Hutchinson** ARCHITECTURE LLC

521 East Beaver Ave.  
t: 814.234.6806

State College, PA 16801  
e: ffaia@aol.com

f: 814.234.0256



## STATE COLLEGE FOOD BANK - FRONT ELEVATION

1/8" = 1'-0"

**STATE COLLEGE  
FOOD BANK**

169 GERALD STREET  
STATE COLLEGE PA. 16801

**Fernsler  
Hutchinson** ARCHITECTURE LLC

521 East Beaver Ave.  
t: 814.234.6806

f: 814.234.0256

State College, PA 16801  
e: ffaia@aol.com