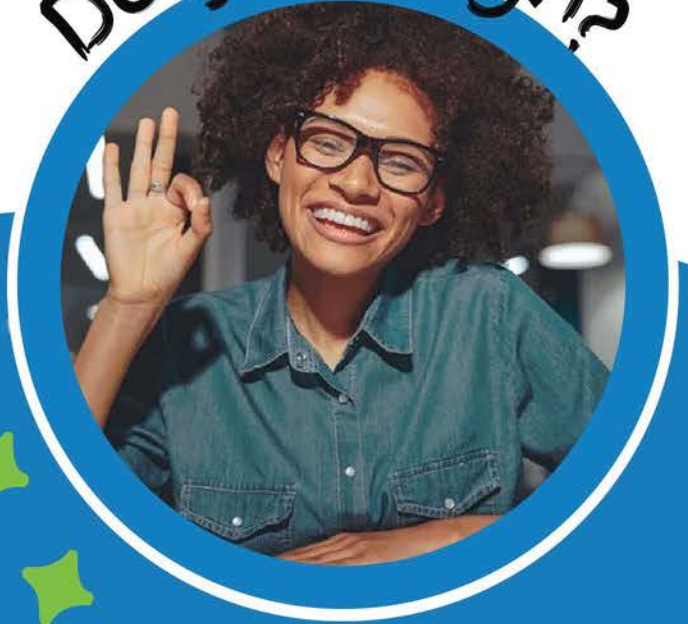


Do you sign?



We are looking for someone to work with a school-aged youth after school & on weekends!

Direct Support Professional

\$17.47 - \$20.11 per hour

POSITION REQUIREMENTS

- High school diploma or GED
- Driver's License, personal vehicle, and clean driving record
- Comfortable providing personal care and hygiene assistance

SCAN ME



Apply Online!

www.hopealaska.org/careers

For more information, please contact us at jobs@hopealaska.org or 907-433-1730