



Gratitude Report

July 1, 2021 - June 30, 2022

Table of Contents

Reflections from our Executive Director	1	Alumni of Hope	13
Planting Seeds for the Future	2	FY22 Financials	15
Celebrating the Harvest	7	Donor Appreciation	16
Decades of Investment	9	Looking to the Future	25



Board of Directors

President

John Dittrich

Vice President

Lisa Jackson

Secretary

Kendra Sticka

Treasurer

Parry Grover

Members

Mary Bolin

Kathy Fitzgerald

Petter Jahnsen

Arthur Jensen

Jeannette Levine

Robert Owens

Avalon Rachelle-Kraft

Tamara Russell

Joseph Sonnier

Jo Ann Stromberg

Reflections from our Executive Director

Seedfolks, a book by Paul Fleischman, tells the story of a vacant lot that became a vibrant community garden – from the lens of 13 different members of the community. The story begins with a 9-year-old girl *planting seeds* to honor her dead father, and from that single act of love, in an environment that others would deem hopeless, transformation occurs and a diverse community comes together for a shared purpose.

I love thinking about this wonderful story as we enter the season of Thanksgiving and reflect on how the seed planted by Nancy Stuart over 54 years ago continues to bear fruit, even during adverse conditions. To grow, seeds need to be dropped in dirt, be covered with darkness and work to find the light. The last few years have challenged us all on so many levels. There have been many days we have felt covered by darkness and have struggled to *find the light*.

Our Gratitude Report this year focuses on the fruition of this struggle – sharing with each of you the moments we have celebrated, the people who have brought and continue to bring light and impact, and how we continue to view challenge from a *lens of abundance* as we continue to plant seeds for the future we desire.

Audrey Hepburn once said, “To plant a garden is to believe in tomorrow,” and like the diverse characters in *Seedfolks*, we all have come together with a shared purpose – to support people with differing abilities to have meaningful lives in supportive communities.

We are *deeply grateful* for each contribution to our mission; to those who choose our services, our incredibly dedicated staff, our funding partners, and donors as well as members of our statewide community who consistently water the seeds of inclusion and help transform what can sometimes feel hopeless into a garden of diversity.

With heartfelt gratitude,
Michele Girault



Planting Seeds for the Future

Hope is in the business of harvesting - not of foods or plants, but of inclusive communities, person-centered supports, and meaningful relationships. Each and every day, we sow seeds for a sustainable future in Alaska and beyond through advocacy, education and awareness, with the hope that one day our work will be fruitful. Every seed

holds future promise, and that promise might be harvested tomorrow or next year or for the next generation. Here are examples of our recent efforts and involvement in advocating for improvements for the disability community, as well as rewards we and the people we support have reaped this year as a result of seeds sown in the past.



Advocacy in the disability community is an active and ongoing need, and for people who experience a disability, advocacy has the greatest impact when the person's full circle of support—family and friends, caretakers, community members—advocates to protect and promote their rights. Advocacy is a tool that builds awareness of needs and has the power to lead to legal and social change. It breaks down barriers and supports each person's right to receive fair treatment and access to resources, to maintain choice and control over their life, and for their voice to be heard.



Hope is actively engaged in Alaska's primary advocacy coalitions for disability and mental health — Michele Girault, Hope's Executive Director, is the President of the Board of Key Coalition. Michael Bailey, Hope's Deputy Executive Director, is on the Board of Alaska Association on Developmental Disabilities (AADD). And Paul Ingram, Hope's Clinical Director, is on the Board of Alaska Behavioral Health Association (ABHA).



The Key Coalition of Alaska brings together primary stakeholders, their families, Care Coordinators, provider agencies, and the staff providing supports to collaborate and advocate for policy and practice changes that will enhance the lives of Alaskans experiencing disabilities. AADD, Peer Power of Alaska, and Alaska Alliance of Direct Support Professionals are active participants in the coalition. Each year, Key Coalition hosts 'Key Campaign' where members from across the state advocate for an established platform and address needs, gaps and barriers.

The impact of recent advocacy has been tangible for the people we serve. The collaborative advocacy this past legislative session resulted in key legislation being passed for telehealth and Able Act expansion, budget increments expanding allocations for direct support staff wages, and a reduction of waitlists.



Planting Seeds for the Future

'A Night of Hope' Auction

After two years without being able to host an in-person event, we were thrilled to be able to come together for our 'Night of Hope' auction in February. With the help of more than 25 community volunteers and 170 attendees, we raised \$85,000. These funds have made a powerful impact on our community, providing resources and opportunities for Alaskans who experience disabilities.

We honored the Rasmuson Foundation with the Outstanding Community Partner award for their decades of support to Hope. Their partnership has enhanced lives, made dreams come true, and brought joy to many. Our original recognition of the foundation was planned for October 2021, prior to the passing of Ed Rasmuson. We are so grateful for his leadership, his heartfelt care for Alaskans and the tremendous legacy of impact he left for others to carry forward. To represent the award, we presented Jeff Baird, Chief of Staff at Rasmuson Foundation (right), with a piece of art created by Hope Studio artists—a dragon—which the artists depicted as a protector, a shield, and a place of safety.



Board member Petter Jahnsen presented Hope's Willow Ranch with the Journey Award for its beautiful example of bringing dreams to life and for connecting people and passion into a community of purpose. Hope purchased land in Willow in 2007 after many years of considering how we could meet the needs of Alaskans who experience disabilities who wanted to live a more rural and culturally traditional lifestyle.

Frank Forpahl, now the manager of the ranch, shared Hope's vision and was very involved in building the ranch community into what it is today. His person-centered approach and knowledge of rural living made him the perfect person to teach, coach and mentor the young men who now call the ranch their home. These men are active participants in the ranch's day-to-day operations. Through the years, they have helped care for pigs, yaks, turkeys, geese, chickens, horses, and cows; they also harvest crops and help with upkeep and maintenance of the property. The development and success of the Willow Ranch is a wonderful example of the power of a planted seed and communities coming together with a shared purpose.

We were honored to have the late Congressman Don Young (left)—a long-term friend of Frank's and supporter of the ranch—attend the auction.

Planting Seeds for the Future

Walk & Roll for Hope



With the help of our great community, we raised more than \$53,000 at our 53rd annual Walk & Roll event in Anchorage, plus an additional \$5,000 at our Kenai Walk & Roll. These funds go toward necessary housing repairs, remodels, and improvements for the people we support. Hope continues to host this event each year with the support of thousands of Alaskans who gather pledges and walk, run, bike, or roll to bring awareness to critical disability services in Alaska.

Intentional Neighborhoods



We hosted members from the Alaska Mental Health Trust at our Kenai Intentional Neighborhood, where we gave them a tour of the neighborhood and shared the goals, philosophy, and day-to-day operations. A few guardians shared their personal stories and experiences of having their children live in this community-centric model as opposed to traditional assisted living models. With an initial grant from the Alaska Mental Health Trust and additional partnerships, our goal is to expand this model across more Alaskan communities to give people who experience disabilities the opportunity to lead full, inclusive, enriched lives in an interdependent community setting.



Planting Seeds for the Future


Community Engagement

Each of Hope's regions is involved and engaged in the community in a variety of ways. Hope's Community Engagement Center in Anchorage is a place where people of all ages and abilities come together to connect, to discover and build new skills, and to showcase their creative talents. This year, Hope Studio and our artists hosted many events and celebrated many accomplishments, including officially re-opening the Studio Gallery for the first time since COVID and returning their number of participants to close to that of pre-COVID numbers.

The Hope Studios team hosted a collaborative art project at a senior center in Palmer, where the seniors and our artists worked together to create wood art pieces that are now hanging in the main lobby of the senior center. They also had their first in-person summer camp in three years, offered a new photography class and community photo shoot, hosted an art show in Talkeetna, and collaborated with students from Talkeetna High School to redesign their wolf logo. The Hope Studio artists also won an award at the Walk & Roll for Hope for their beautifully crafted wings (right middle), which are also for sale in the Studio Gallery.

The men who live at Hope's Willow Ranch demonstrate community engagement each and every day. From helping a neighbor shear sheep, baling hay, plowing the road, and participating in community gatherings they are immersed in the community of Willow. This past winter, through the support of generous donors, our team purchased a snowcoach (right bottom). This enables those who are unable to safely ride on a snow machine to experience the beauty of the Alaska winter from the safety and warmth of the snowcoach, which is pulled behind a snowmobile.





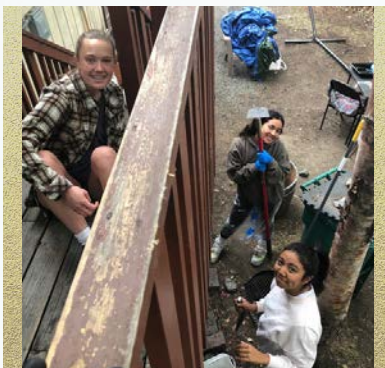
To plant a seed
TODAY
is to believe in
TOMORROW ✨



Celebrating the Harvest

"It takes a village." This wise proverb applies not only to raising children but to cultivating meaningful, self-guided supports for people who experience disabilities. We could not do what we do without the collective efforts and

dedication of partner agencies and volunteers, who bring a diversity of skills to our organization, build relationships, help us prioritize critical funding, and often become long-term advocates of our mission.



Thank you to our Volunteers!

This year, many generous volunteers helped with a variety of much-needed projects at our assisted living homes including landscaping and yard maintenance, interior painting, home repairs, fence and deck painting, power washing, filling potholes, detailing our fleet vehicles, fire mitigation, cleaning home interiors, and more. Many volunteers also helped at our Walk & Roll for Hope event and annual Auction.



We offer our sincere thanks to the following volunteers for their time, generosity, and partnership.

- AK Rhinestone
- Alaska Amateur Radio Club
- Americorps
- Anchorage Midtown Rotary
- Anchorage Royalty
- Ben Wallingford
- Bettye Davis East High School Student Government
- CITC
- Credit Union 1
- Diane Mucha
- Eagle River Lions
- Elly Frey
- Grace Smithson
- Heather Sealy
- Kiwanis
- Knights of Columbus
- Lorna Roberts
- National Leadership Council
- Omega Psi Phi Fraternity
- Sleeping Lady Mountain Lions
- Steve Franklin
- Tiffany Karling
- Westcoast Connection



Celebrating the Harvest

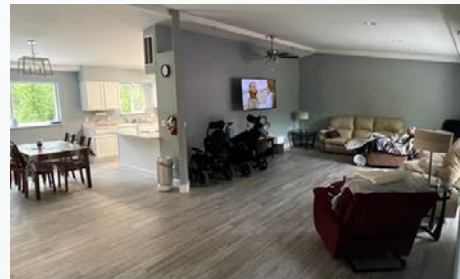
Business Support

With the support and generosity of Rasmuson Foundation and other community partners, we are thrilled at the outcome of several assisted living home renovation projects we were able to accomplish, with more to come next spring and summer. The transformations are amazing and have greatly improved the homes' accessibility, safety, and quality.

These projects and more were also made possible by the partnerships of local contractors and vendors. Torres Services, LLC completed four bathroom remodels, built new wheelchair ramps at two homes, and repaired one of our decks. Alaska Frontier Services, LLC and Alaska Asphalt, LLC built new driveways at two homes, repaired two of our parking lots, and assisted with snow plowing services. Chinook Fire Protection, Inc. inspected and serviced our fire systems and installed new ones where necessary.



Before After



Decades of Investment

Collectively, our current staff members have more than 4,000 years of longevity with Hope. That amounts to thousands of moments supporting the people who choose our services, investing in their lives, advocating for their needs, wants and dreams, and building bridges for them to have meaningful experiences and opportunities. An astounding

50 employees have invested two or more decades of their careers to Hope. Here we feature a few of our long-term staff members, knowing there are hundreds more worthy of recognition. We can't adequately express the gratitude we have for our team and for each individual who chooses to support Hope's mission and vision.



Dr. William Browner

The first staff members we are honored to highlight are two of our medical personnel who have worked for Hope for 42 and 32 years respectively, nearly their entire careers dedicated to Hope. Dr. William Browner is our Medical Director and has moved our mission forward as a compassionate healer and advocate for thousands of Alaskans. Jo-Anne Sullivan is our Deputy Director of Health and Wellness and serves all people with benevolence and an endearing sense of humor. This year, Providence Alaska aptly presented Jo-Anne the "Celebrating Nurses" award for her positive impact in the lives of patients, families and communities in 2021.



Jo-Anne Sullivan

Our organization has benefited exponentially from both Dr. Browner and Jo-Anne's guidance throughout their tenure, but ever since March of 2020, we have found ourselves relying on them like never before. When the COVID-19 pandemic began, Dr. Browner and Jo-Anne did not hesitate to take on the enormous challenge of guiding our organization through an unprecedented health crisis, adjusting our business practices to protect the health and safety of our stakeholders, and ensuring we could still provide full and meaningful services to the people we support. Their stewardship has contributed to a broad mitigation of COVID-19 among all stakeholders over the past two-and-a-half years. One silver lining of the pandemic has been the peace of mind that exceptional leaders such as Dr. Browner and Jo-Anne have provided all of us. We are eternally grateful for their decades of service to Hope and to all Alaskans.

Decades of Investment

Vincent Goodsell

Home Alliance Coordinator | Anchorage
30-year anniversary: March 30, 2022

Vince has been a Home Alliance Coordinator (HAC) for 28 of the 30 years he's been with Hope. He is our longest-serving live-in staff, and we are beyond grateful for his commitment to the people we serve. Vince said, "Being an HAC is meaningful to me because it isn't a fragmented job. As an HAC you don't have a role to play, you play every role. It's an integrated whole. Also, the job is very meaningful in the way that caring for and supporting people is directly and immediately meaningful. If you've lived with the same people for almost 28 years, as I have, they are your family."



Marita Calderon

Direct Support Professional | Anchorage
20-year anniversary: October 17, 2021

In her 20 years with Hope, Marita has direct support experience caring for individuals with challenging behaviors. She has strong relationships with people she supports and brings calmness, positivity and professionalism to the home and to her team. She is a leader and role model for others, and when asked what working at Hope has meant to her, she said it makes her happy to watch the individuals grow and achieve their goals in life.



Teresita Olaes

Direct Support Professional | Kodiak
20-year anniversary: October 1, 2021

Teresita, 'Tess,' has been a Direct Support Professional with Hope in our Kodiak region for more than two decades. She supports individuals in pursuing new experiences every day and achieving their dreams. When asked what she enjoys most about the work she does, she said it's all about being with them and seeing them smile every day. Working for Hope has brought her fulfillment and happiness.

Decades of Investment



Gody Zarate

*Direct Support Professional | Kodiak
20-year anniversary: April 17, 2022*

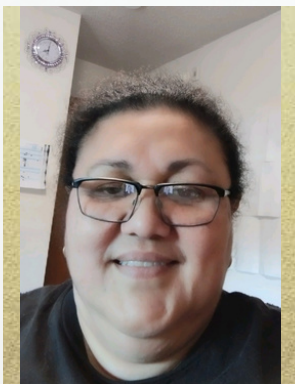
Gody has been a DSP in our Kodiak since 2002, and before joining our team, one of his daughters was a recipient of services. "Hope has driven me to live a life with purpose. I am happy to see these individuals happy and enjoying a normal life, worthy and useful in the community," he said when asked about his time at Hope. Gody guides and assists people with differing abilities with care, kindness, and patience. "It's my privilege to be an employee with Hope," he said.



Ma-Cecilia Luzano

*Benefits & Compensation Specialist | Anchorage
15-year anniversary: August 29, 2021*

Cehz is well known in our organization and community as she has held eight different positions since she joined Hope as a DSP at the age of 19. In all she does, Cehz works with kindness, patience, and passion for the people we serve. When asked what keeps her at Hope, she said, "The people and the mission! I firmly believe our mission is the purest form of humanity at its best. What can be more noble than protecting and caring for the vulnerable?"



Carol Tinai

*Direct Support Professional | Anchorage
15-year anniversary: October 9, 2021*

Carol is a Direct Support Professional but also has experience with individuals who need more intensive supports. She is a dedicated staff member who always goes above and beyond, not just for the people she supports but her co-workers as well. She has strong leadership skills which led her to becoming the lead of the house. She works hard to maintain a safe and nurturing home for everyone.



Never
underestimate
THE POWER
- of a -
PLANTED SEED



Alumni of Hope

It is often bittersweet when a person's employment with Hope comes to an end, but we are proud to be a part of each person's journey and to stay connected as they go on to do incredible things for our great state and beyond. Our alumni community transcends

generations and geographic boundaries, and we'd like to share just a few of many stories, accomplishments, and ways people have carried our shared values on throughout their careers.



Rich Saville

Employed with Hope 1992-2003

Rich Saville has served Alaskans for decades, and his connection to Hope goes way back. His father Mike Saville is a former CFO at Hope, so as a child Rich grew up 'walking for Hope,' volunteering at events, and attending gatherings and activities. In May of 1992 he became an official employee and worked for the next 11 years as a Direct Support Professional, Home Alliance

Coordinator, Community Support Supervisor and Care Coordinator. His next career step took him to the State of Alaska where he worked in assisted living licensing, and in 2010 he became the administrator for the Anchorage Pioneer Home. This past April he joined the staff of the Governor's Council on Disabilities and Special Education, bringing with him a rich history and heart for service. Throughout his career, Rich has had thousands of moments of positive impact on others.



Lizette Stiehr

Employed with Hope 1974-1977

Lizette drove to Alaska from Indiana where she had been a Special Education teacher serving junior and high school students. She was given a tour of one of Hope's first homes and found she loved our mission. She began working at Hope (then Hope Cottages) in 1974 as a Case Manager, then promoted to Director of Program and Living Unit Services in 1977. After leaving Hope, she

continued serving individuals who experience developmental disabilities through the Infant Learning (Early Intervention) program for 11 years and then as Executive Director of FOCUS for 13 years. For the past seven years until her retirement this year, she served as the first Executive Director of Alaska Association on Developmental Disabilities. Lizette is a woman of value, a woman who has made a difference to the sector, to her colleagues, and to the world at large. She is a bright light who has left an imprint on so many and will continue to shine on whatever path she takes.

Alumni of Hope



Sandra Heffern

Employed with Hope 1980-1982

After completing her degree in psychology from San Francisco State University, Sandra was a Program Coordinator with Hope (then Hope Cottages) from 1980-1982. Her career from that point included service as a court visitor and program coordinator, then director of a vocational support program for Alaskans with disabilities. In 1995, she opened Ready Care, an agency serving both seniors and people with disabilities, which she ran until selling the business in 2010. Using her vast experience in the sector, she transitioned her focus to systemic support and opened Effective Health Design, where she currently serves as President.

Sandra's extensive experience in the design and implementation of home and community based long-term services and supports has provided opportunities for her to facilitate multi-organization collaborations, strategic visioning and policy development. Sandra is known as a 'go-to' leader, and her positive imprint on enhanced disability support systems is noteworthy. We are proud to call her a Hope alum!



Tribute to a champion



Johnny Ellis

March 13, 1960 - February 9, 2022

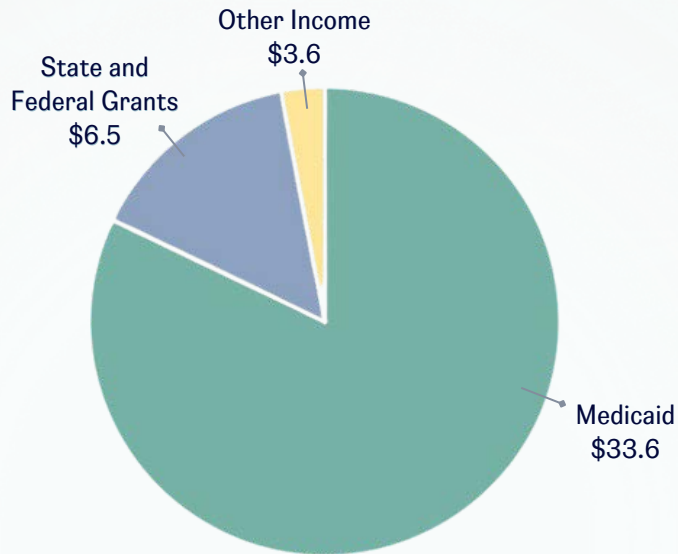
In February, we mourned the loss of Senator Johnny Ellis, who was a firm believer that community was the key for people experiencing disabilities. He championed the initiatives of the Key Coalition during his tenure as an Alaskan Legislator and invited his colleagues on numerous occasions to stand with him. We will all be forever grateful for his leadership, steadfast advocacy and most of all his heart for service.



Financials

July 2021 - June 2022

Revenue



Expenses



Figures are in the millions and are based on internal financials. Audited financials will be finalized by 12/31/2022.

Donor Appreciation

Thank you to the individuals, businesses, and organizations that made an investment in Hope in 2021 - 2022. Every gift is a seed of hope and opportunity, and it is only with your

support and the support of our whole community that we can continue to create meaningful experiences for the people who choose our services.



Business and Organization Donors

Platinum

\$15,000 and higher

Rasmuson Foundation

Gold

\$5,000 - \$14,999

Alliant Insurance Services, Inc.

Anonymous

City of Kodiak

ConocoPhillips Alaska

GCI Communication Corp.

Hilcorp Alaska

Rasmuson Foundation

Sleeping Lady Mountain Lions

Silver

\$2,500 - \$4,999

Allstate Foundation

Applied Microsystems, Inc.

Davis Wright Tremaine

GCI

Bronze

\$1,000 - \$2,499

Alaska Airlines

Alaska Peace Officers Association

All For Kids Pediatric Therapy

Alyeska Pipeline Service, Co.

Calista Corporation

CIRI

Cook Inlet Tribal Council

Credit Union One

Diamond Ladies Motorcycle Club

Doyon Limited

du Alaska

Eagle River Lions Club

First National Bank Alaska

FNBA Employees Club

Fred Meyers Jewelers

Friends of Hope

Futura Fisheries, Inc.

KPMG

Mat-Su Health Foundation

Northern Waste, LLC

USI Insurance Services



Donors

Businesses & Organizations

Patrons

\$100 - \$999

ABATE of Alaska
Alaska Horse Ranch
Alaska Industrial Hardware
Alaska Pretrial Services
Alaska Railroad
Alaska Restaurant Supply
Alaska Wildland Adventures
Allure Day Spa & Hair Design
Alyeska Resort
Anchorage Kiwanis Club
Anchorage Log cabin Quilters
Anchorage Sand & Gravel Co.
Bagoy's
Batteries Plus
Bear Creek Cabins
Blazing Smokes
Body Renew Fitness
BPOE Palmer Elks Lodge #1842
C&S Mobil Music
Carve Shack
Charities Aid Foundation America
Chinook Business and Professional Women's Club
Construction Machinery Industrial, LLC
Costco Wholesale
Crush
David Jensen Photography
Denali Ski Patrol
Dimond Center
Enstar
ESS
Esthetics by Julie McNamara
Fashion Pact

Patrons

\$100 - \$999

Fred Meyer / Littman Jewelers
Fromagio's Artisan Cheese
Frontstream
Graybar Electric
Harley Hamilton
Hong Kong Spirit Food
Hope Art Studio
Humpy's Great Alaskan Alehouse
Hydrate Alaska
Inlet Towers
K&L Distributors
Knights of Columbus Council 4859
Koots
Kroger Community Rewards
Little People
Lowe's
M & J Plumbing & Heating
Main Event Grill & Catering
Major Marine Tours
Odom Corporation
Odom Corporation/Coca-Cola Alaska
Orutsararmiut Traditional Native Council
Phillips Cruises & Tours, LLC
REI
Scout & Cellar/Starla Heim
Seas of Glass
Simpson Holland Real Estate KW Alaska
Subway of Alaska
United Way of Anchorage
USI
VF Grace
YourCause

Donors

Businesses & Organizations

Friends of Hope Up to \$100

2 Friends Gallery
49th State Brewing Company
AK Wine Grotto
Alaska Forge
Alaska Leather
Alaska Wildlife Conservation Center
American Online Giving Foundation
Arctic Roadrunner
Bear Essentials Custom Log Furniture
Benevity
Birch Grove Studios
Borealis Bubble Co
Cabin Fever
Costco
Dino's Donuts
Elaine S Baker & Associates
Firetap
Girl Scouts of America, Alaska

Friends of Hope Up to \$100

Great Harvest Bread Comapny
Illusions Food Company
Kaladi Brothers Coffee
King Street Brewery
Last Frontier Axe Co.
Mylords Floral
Palmer Golf Course
Paramount Cycles
Rippin Wristlets
Side Street Espresso
Suite 100 Restaurant
Sweet Caribou
The Happy Hippie Store
the Mineshaft
The New Peanut Farm
Two Fat Chickadees
Wild Scoops



Donors

Individuals

Platinum

\$15,000 and higher

Michele Girault & Chuck Wright
Petter Jahnsen

Gold

\$5,000 - \$14,999

Barbara Garner
Derrill & Iris Johnson
Gavin Kim
Corbett Mothe
Dr. Roy T. Scheller
David P. Wolf

Silver

\$2,500 - \$4,999

Jeff Baird
Delyne Chambers
Debra Hall
Dr. Bennett & Lisa Jackson
Barbara Simpson Kraft

Bronze

\$1,000 - \$2,499

Michael Bailey
Ty & Nancy Bell
Mary Bolin
Carrie Carson
John & Andrea Dittrich
Kathy Fitzgerald
Mary Funner
Margaret Gossmann
Parry Grover
Tom & Vanessa Hiratsuka
Debbie Holms
David Itter
Angela Kennedy
Jeannette Levine
John F. McManamin
Molly McManamin
Joanne McNamara
Michael Merritt
Douglas Parker
Jim Porch
Cody Rice
Caitlyn Scott
Robin Siverson
Curtis Sparks
Kendra Sticka
Jeremy & Sharayah Talarovich
Michael Weidmer



Donors

Individuals

Patrons \$100 - \$999

Sal Addinos
Beth Aguilar
Vinnie Almanza
Sandra Anderson
Jo Ann Stromberg
Rita Arias
Laura Aspelund
Sonya Astad
Bronwyn Bailey
Estella Bailey
Stefanie Baird
Valerie Bale
Duane Balluta
Mercedes Barbaza
Ramon Barbaza
John Barrowman
Amanda Bauer
Emily Baumgartner
Carla Beam
Eileen L. Becker
Joe Bell
William Bell
Rick Benjamin
Katherine Berry
Carol Blake
Laura Bonner
Amanda Bradish
Julie Branham
Kelly Brewer
Leon Bridges
Mike Bridges
Paul Brotherton
Mary Buckle
Edmund Burke
Misty Cain

Patrons \$100 - \$999

Brianna Campbell
Eron Carlucci
Anne Carpenter
Rebecca Carrington
Christine Carsten
Marjorie Carter
Sky Carver
Deborah Casey
Heather Cashen
Kathleen Cauble
Lisa Cauble
Rose D. Childs
Amanda Chmielowski
Phylicia Christian
Bruck Clift
Matthew Coates
Kyle Cole
Gena Coleman
Brooke Cooper
Shane Core
Andrea Cummings
Ashley Dolan
Joseph Dolan
Ryan Douglas
Cynthia Drinkwater
Debra Dummann
Tami Eller
Norma Empey
Roberta Erwin-Sahr
Richard Fagg
Ann Fink-Nelson
Kara Fitzgerald
Mary Flanigin
Shannon Foreman
Frank Forpahl

Patrons \$100 - \$999

Jeanne Fox
Chris Fratello
Karen Freestone
Kristin George
Dennis & Judy Gieser
Kelly Gifford
Jolene Girault
Erin Glines
Kelly Griebel
Dorian Gurley

Patrons \$100 - \$999

Susan Hildreth
Della Hills
Karen Hilyard
Robert E. Holta
Avigal Horrow
Michelle Ingram
Brooke Itter
Michael Jaeger
Melissa Jay
Michael Jeffery



Eric Gurley
Kaleen Haines
Michelle Haire
Eric Hamerski
Richard Hans
Sharon Harbuck
Edward Tom Harmer
Jennifer Harris
SaVina Haywood
David Heuman
Leslie Hicks
Shelley Higgins
Erica Hildebrand

Arthur Jensen
Kristan Jez
Thomas Jez
Kris Johnston
Sondra Jones
Elisabeth Kachline
Tiffany Karling-Hunt
Steffi Kim
Natalia Kitsick
Angela Kuest
Erich Kurzweg
Bruce Lee
Diana Lehman

Donors

Individuals

Patrons \$100 - \$999

Aina Lenda
Ruvi Lesano
Lynn Lowman
Alla Lushchik
Sandra Manfred
Andrew Marchant
William Marshall
Christina Mascelli
Danny Mascelli
Peter Mathiesen
Sharon Mattingley
Darline McLaughlin
M. Renee Mercer
Andrew Mettler
Benjamin Mettler
Julie Mettler
Valorie Lee Miller



Patrons \$100 - \$999

Michael G. Moeglein
Doug Moerlein
Conrad Moller
Wanda Moore
Siri Moss
Lori Moyer
Diane Mucha
Barbara Nath
Shannon Nugent
James Olson
Peggy Ormsby-Tipton
Robert Owens
Kris Palmatier
Elizabeth Patience
Jim Patton
Amy Pearce
Andres Pereyra
Heather Perfetta
Colton Perrins
Eric Peterson
Carl A. Propes Jr.
Tiny Ptarmigan
Frank Pugh
Mary Kae Quiambao
Linda Rabideau
Jennifer Rafferty
Sergios Rahmatoulin
Laurie Reed
Jessica Renee Rinck
Chad Reynvaan
Corbi Rhoades
Tara Riemer
Melissa Robinson
Kyle Roehling
Mary Rohlfig

Patrons \$100 - \$999

Brian Rohn
Rey Romang
Samantha Romig
Clint Ross
Jean Rosston
Lori Rucksdashel
Tamara Russell
Heather Sardella
Tiera Schroeder
Larry Schutt
Holly Scott
Rhonda Scott
Maya Scruggs
Heather Sealy
Tonya Sendgraff
Andrew Shanahan
Winifred Shanders
Terri Shanley
Catherine Sheehy
Nancy Sheehy
Susan Rae Shern-Holta
Diane Siewert
Sherrie Simmonds
Sherrie Siverson
Samantha Smith
Sherry Smith
Connie & Randy Soltis
Joseph Sonnier
Barbara Sperling
Elijah Stafford
Susan Stafford
Debbie Standefer
Stephanie Stevens
Joseph Stratman
Sharisse Stroud

Patrons \$100 - \$999

Jo-Anne Sullivan
Mike Swisher
Abdou Tall
Suzanne Taylor
Laura Thomas
Charles Thompson
James Thornton
Kazuko Tifental
Elisa Tornberg
Kevin Tritt
William Trotter
Kalani Tucker
Shelly Vendetti-Vuckovich
Lina Villar
Jan Wachsmuth
Michael Wachsmuth
Steven Wakeland
Jamey Walker
Monica Walsh
Jerome Wasson
Christina Watson
Diana Watson
Bob Weller
Karen West
Ritchie & Lisa West
Tracie White
Krista Williams
Steve Williams
Chris Wilson
Jennifer Woodward
Thomas Woodward
Congressman Don Young
Anita Youngman
Isis Youngman
Porter Youngman

Donors

Individuals

Friends of Hope Up to \$100

Katrina Ahlfield
 Ecaterina Alexandru
 Nelson Alger
 Nancy Alip
 Taylor Allen
 Rev. Dawn Allen-Herron
 Lee Ann Hamerski
 Vanessa Armbrister
 Shawn Asplund
 Sydney Asplund
 Robert Austin
 Cheri Backman
 Samantha Bacon
 Jason Baer
 Adam Baldwin
 Judy Bales
 Catherine Barnett
 Kate Barnett
 Amber Becker
 Prime Beef
 Shannon Berry

Friends of Hope Up to \$100

Cristina Bieber
 Andrew Bilski
 Mary Bingham
 Janet Birky
 Dr. Herb Bischoff
 Anika Biss
 Yvonne Biswokarma
 Diane Blas
 Emanuella Bliss
 Joseph Boling
 Daniela Boulton
 Brooklynn Bourland
 Katie Bourland
 Scott Bourland II
 Raychel Brandenburg
 Ruth Bratz
 John Brewer
 Abigail Bronczyk
 Alexander Brooker
 Jessica Brunsting
 Kathleen Bugbee

Friends of Hope Up to \$100

Kayla Burger
 Karen Burns
 Sarah Burtner
 Shannon Buterin
 Rebecca Cameron
 Amy Campbell
 Arceli Carreon
 Holly Carroll
 Michelle Cassano
 Stacy Catania
 Karen Cauble
 Dana Ceccarelli
 Katie Chadwich
 Aditya Chaobal
 Alexandra Clark
 Sonia Clary
 Christine Collier
 Crystal Collins
 Jensen Cook
 Kewanda Cooper
 Charlotte Coots

Friends of Hope Up to \$100

Jena Crafton
 Steve Cross
 Matt Cullen
 Kyle Cunningham
 Megan Davidson
 Bruce Davis
 Kimberly Davis
 Leslie Davis
 Liz Davis
 Savannah Davis
 Sarah Deuling
 Blas Diane
 John Dittrich
 Heather Dougherty
 Dorothy Duncan
 Celeste Early
 Roberta Eleazer
 Christine Elias
 Jenifer Elliott
 Stafford Emile
 Erin Espiritu



Donors

Individuals



Friends of Hope Up to \$100

Andy Fejes
 Patricia Fielding
 Chloe Fisher
 Lydia Frankenburger
 Sarah Freeman
 Heather Frye
 Roger Fuson
 Nettie Gall
 Jilene Galle
 Michael Gardner
 Mary Garrett
 Jennifer Giles
 Paisley Glines
 Steve Glines
 Lisa Godines
 Sara Gould
 Matthew Gray
 Teri Gray
 Daniel Greenhaigh
 LoriSue Gregg
 Janet Gregory
 Kathy Guinnane
 Joni Haas
 Laura Hahn
 JT Hampton
 David Hannon
 Susan Hartvigson
 Brittney Hayden
 Jonathan Henkel
 Victoria Hennessey
 Brett Hensley
 Carson Hile
 Kristina Hinkle
 Nicholai Hoefflerle
 Agnes Hoffman

Friends of Hope Up to \$100

Kathleen Hoffman
 Sarah Holland
 Kim Holt
 Jianxin Houston-Speckman
 Jacob Hubers
 Sheri Humphries
 Elijah Hutchison
 Jasmine Iloilo
 Jan Ilutsik
 Katey Inman
 Abdulkarim Isa
 Nick J.
 Andrew Jacob Smith
 Lamin Jammeh
 Margit Jensen-Cook
 Frank & Jillian Jez
 Dennis Johnson
 Heidi Jolin
 Cheryl Jones
 Susan Kaiser
 Jimmy Kamph
 Lisa Kerfoot
 Debbie Kerns
 Marilyn Kerr
 Wongi Kin
 Tanya King
 Thuy-Linh King-Harshfield
 Wyeth Kirkeby
 Sarah Kleedehn
 Habiba Kone-Niagne
 Jonathan Krukoff
 Cathi Landacre
 Roni Lanier
 Elizabeth Larson
 Bonnie Leonhard

Friends of Hope Up to \$100

Maria Ruvi Lesano
 Sherri Looman
 Olga Lotosh
 Jennifer Louder
 Carol Marsh
 Larry Marsh
 Jeanette Martin
 Bekah Mathiesen
 Peter Mauro
 Rico McAuriff
 Shannon McBride
 DeBraylin McCaster
 Sonya McFarling
 Krista McNeil
 Kenneth Meekins
 Iliah Merculief
 Stephanie Michel
 Jasmine Mikey
 Michelle Miller Obay
 Sharon Miranda
 Chante Mitchell

Friends of Hope Up to \$100

Josh Monares
 Jennifer Moore
 Marina Moore
 Theodis Moore
 Bruce Morinitti
 Joshua Morner
 Rachel Morse
 Shawna Murray
 Alma Nelson
 Dakota Nelson
 Marci Nelson
 Susan Nelson
 Sarah Opdycke
 Shauna Pajak
 Heidi Payton
 Kurt Pedersen
 Mary Pederson
 Betty & Gary Perchynski
 Shannon Perrins
 Wyatt Perrins
 Nathan Perry



Donors

Individuals

Friends of Hope Up to \$100

Erika Pierce
 Jamie Popham
 Steve Post
 Robert Price
 Lauren Provost
 Oksana Pugh



Pedro Quintana
 Avalon Rachelle
 Paul Randall
 Manuel Recinos
 Judith Renwick
 Rich Rich Owens
 Benjamin Richardson
 Martina Richardson
 Diane Rivees
 Jennifer Rogers
 Margaret Rowland
 Laura Schuchardt
 Gina Schumaker
 Kyle Scott
 Edie Scruggs
 Lisa Sealy
 Brian Seitz

Friends of Hope Up to \$100

Katie Sevigny
 Anita Shane
 Mary B. Sheehy
 Lynn E. Sherwood
 Stacey Shriner
 Mark Simmons
 Dorothy Sine
 Tommy Singleton
 Sheridel Skelton
 Alice Smith
 Bryan Smith
 Kiesey Solis
 Heather Sollenberger
 Abe Soria Sr.
 Erin Spooner Meyer
 Nathalie Steffens
 Tama Stevenson
 Diana Stewart
 Sara Stoops
 Christiana Strand
 Debby Struempler
 Kellyn Sullivan
 Paul Sullivan
 Tamara Sullivan
 Miles Sumida
 Whitney Sutton
 Nancy Tankersley
 Michael Teo
 Jane Thomas
 Christine Tirrell
 Wayne Tocher
 Yvette Tousignant
 Kojin & Jaena Tranberg
 Betty Trottier
 Kristofer A. Turman

Friends of Hope Up to \$100

Sina Valai
 Jackie VanDaff
 Gail VanRavenswaay
 Christopher Vaughan
 Kathryn Veltre
 Liviu Verziu
 Kita W.
 Courtney Wainwright
 Deanna Wainwright
 Eugene Wainwright
 Robert Wallant
 Terrilyn Watts
 Jaci Webb
 Samantha Weiland

Friends of Hope Up to \$100

Pat Wendt
 Sandy Westin
 Jaime Whittle
 Margaret Wilkinson
 Jessica Williams
 Mary Williams
 Mick Williams
 Gayle Wilson
 Carrie Winfree
 Donald Wisch
 Courtney Wise
 Bronwyn Wojcik
 Kendra Wolf
 Colin Yamauchi



Looking to the Future

We are grateful for your continued support and commitment to Hope, and we look forward to planting fruitful seeds with you and our community for years to come. Your partnership and contributions allow us to further our mission in building bridges for people who experience disabilities to live full and meaningful lives.

We invite you to experience Hope by joining us at our *Walk & Roll for Hope* on Saturday, May 6, 2023 and our *annual Auction* on Saturday, October 7, 2023.



Follow Hope on Social Media

Click the links or scan the QR codes with a smartphone camera to visit Hope's social media pages. Follow us to stay up-to-date on events, activities, media releases, videos, articles, and more relevant content you're sure to enjoy. You have the power to help others experience Hope as well! Share our events and stories on social media, introduce us to others, and invite your friends and family to get involved.

Facebook




Instagram



YouTube





Small seeds
- OF -
GRATITUDE
will produce a
harvest of hope

Hope Community Resources, Inc.
540 W International Airport Rd
Anchorage, AK 99518
907-561-5335
www.hopealaska.org

